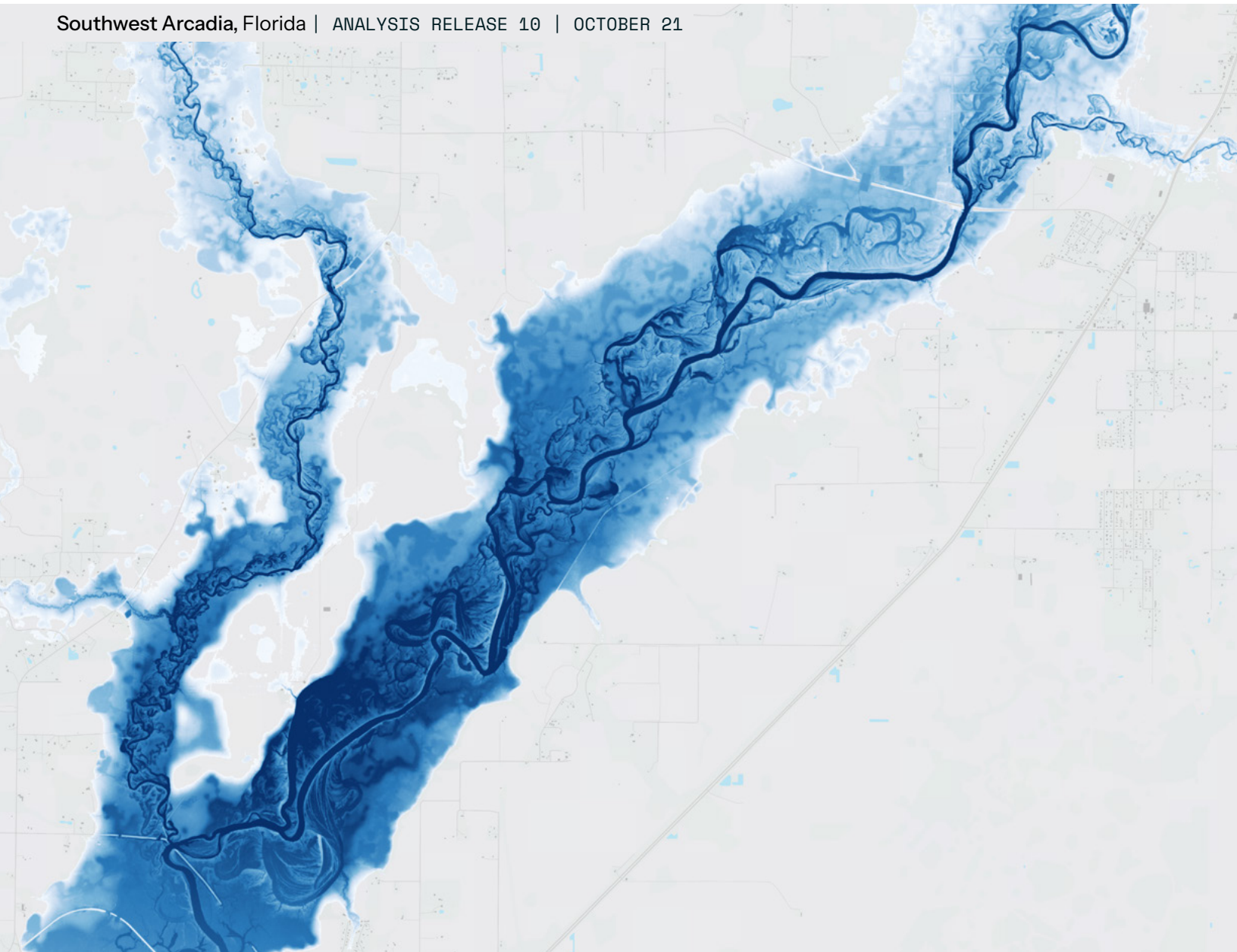


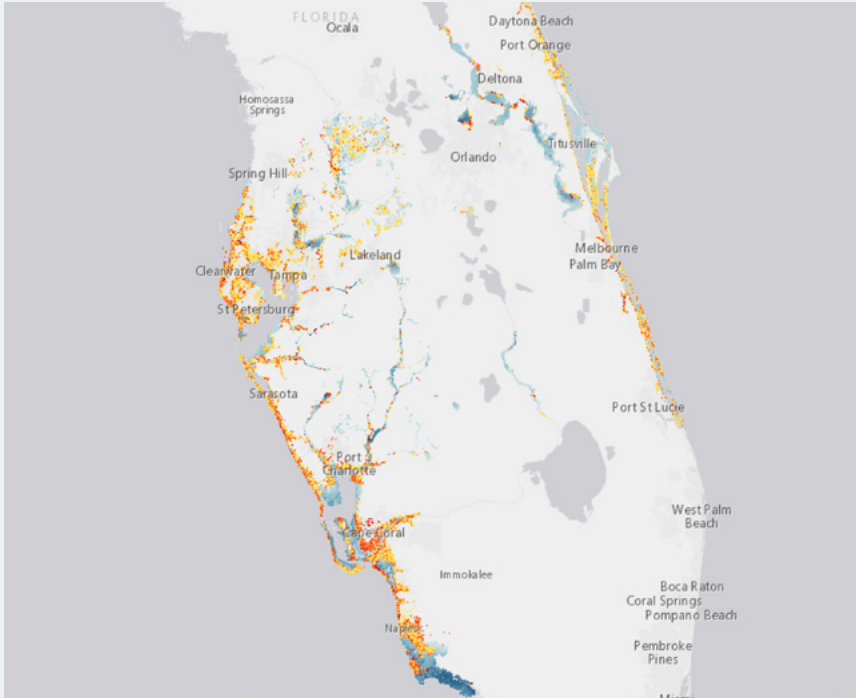
Flooding from Hurricane Milton

Southwest Arcadia, Florida | ANALYSIS RELEASE 10 | OCTOBER 21



Flooding from Hurricane Milton

Background information based on R11



Central and South Florida ANALYSIS RELEASE 10 | OCTOBER 21

Hurricane Milton made landfall near Siesta Key, Florida, on the evening of October 9th, 2024. It struck as a powerful Category 3 hurricane with maximum sustained winds of 120 mph. The storm caused significant storm surges and widespread power outages across Florida's Gulf Coast.

The storm then moved inland, reducing in strength but leaving extensive flooding and damage in its wake. We observed storm surge from Bradenton southward to Naples, and 10-15 inches of rainfall from St. Petersburg through Orlando. Riverine flooding continued through the second half of October as the floodwaters slowly moved downriver.

ICEYE has been monitoring the storm and its impacts since its formation, acquiring over 100 SAR satellite images of the impacted areas through thick storm clouds and even at night. We delivered the first flood extent and depth analysis on October 10th, focusing on the west coast of Florida. Since then, we produced 10 more analysis releases. Based on our final analysis data from Release 11, we identified more than 180,000 buildings that were impacted by the flooding in Florida.

TOTAL FLOOD EXTENT

2,346 sq mi (6,076km²)

MOST AFFECTED COUNTIES

- Hernando County
- Volusia County
- Orange County
- Broward County
- Highlands County

MOST AFFECTED CITIES

- Tampa
- Grant-Valkaria
- Naples Manor
- Bradenton
- Cape Coral

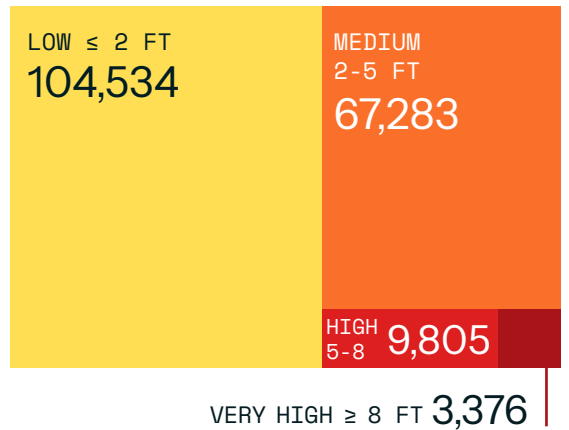
AVERAGE INUNDATION AT BUILDING LEVEL

2.18 ft (0.67 m)

IMPACTED BUILDING COUNT

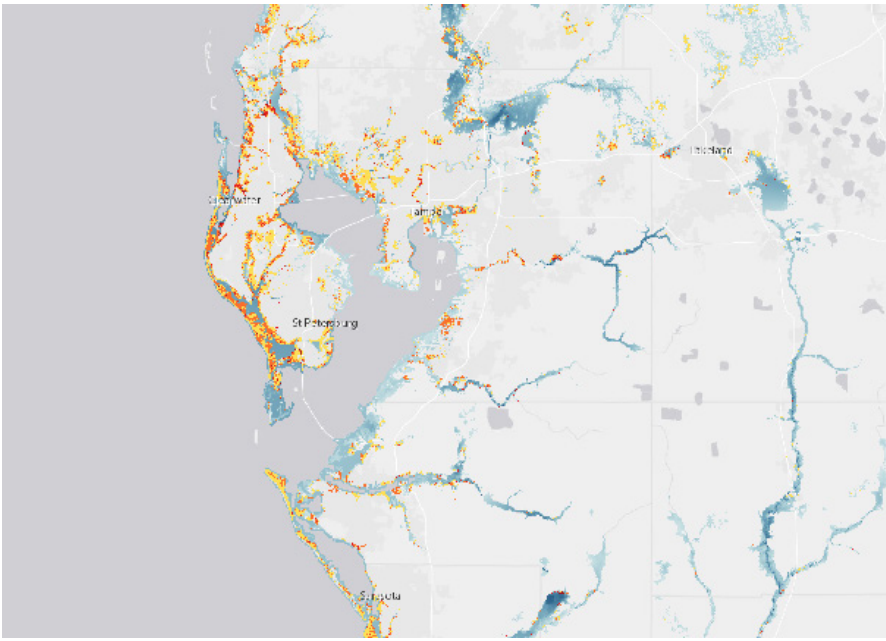
184,998

Total number of buildings affected by flood water depth category



Disclaimer

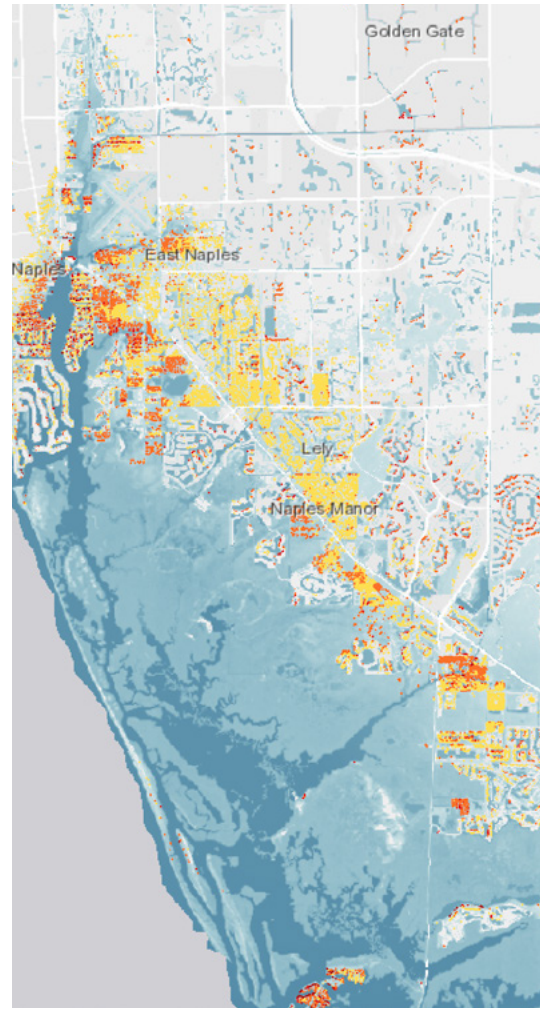
The current data is based on ICEYE's analysis with information collected until October 21, 2024. The analysis is focused on data specific to the regions most affected by the floods. Some areas which have been impacted by the flooding may not be represented in the data.



Hillsborough County

IMPACTED BUILDINGS IN MAP 74,039

ANALYSIS RELEASE 10 | OCTOBER 21



Naples

IMPACTED BUILDINGS 17,832

RELEASE 10 | OCTOBER 21



Cape Coral

IMPACTED BUILDINGS IN MAP 31,722

ANALYSIS RELEASE 10 | OCTOBER 21

ICEYE activation timeline

Monday, October 7

4:13 AM EDT (UTC-4)
Start of monitoring

4:42 AM EDT
First SAR image acquisition

Wednesday, October 9

8:30 PM EDT
Hurricane landfall

Thursday, October 10

7 PM EDT
First analysis release



Get the full analysis via
iceye.com/contact