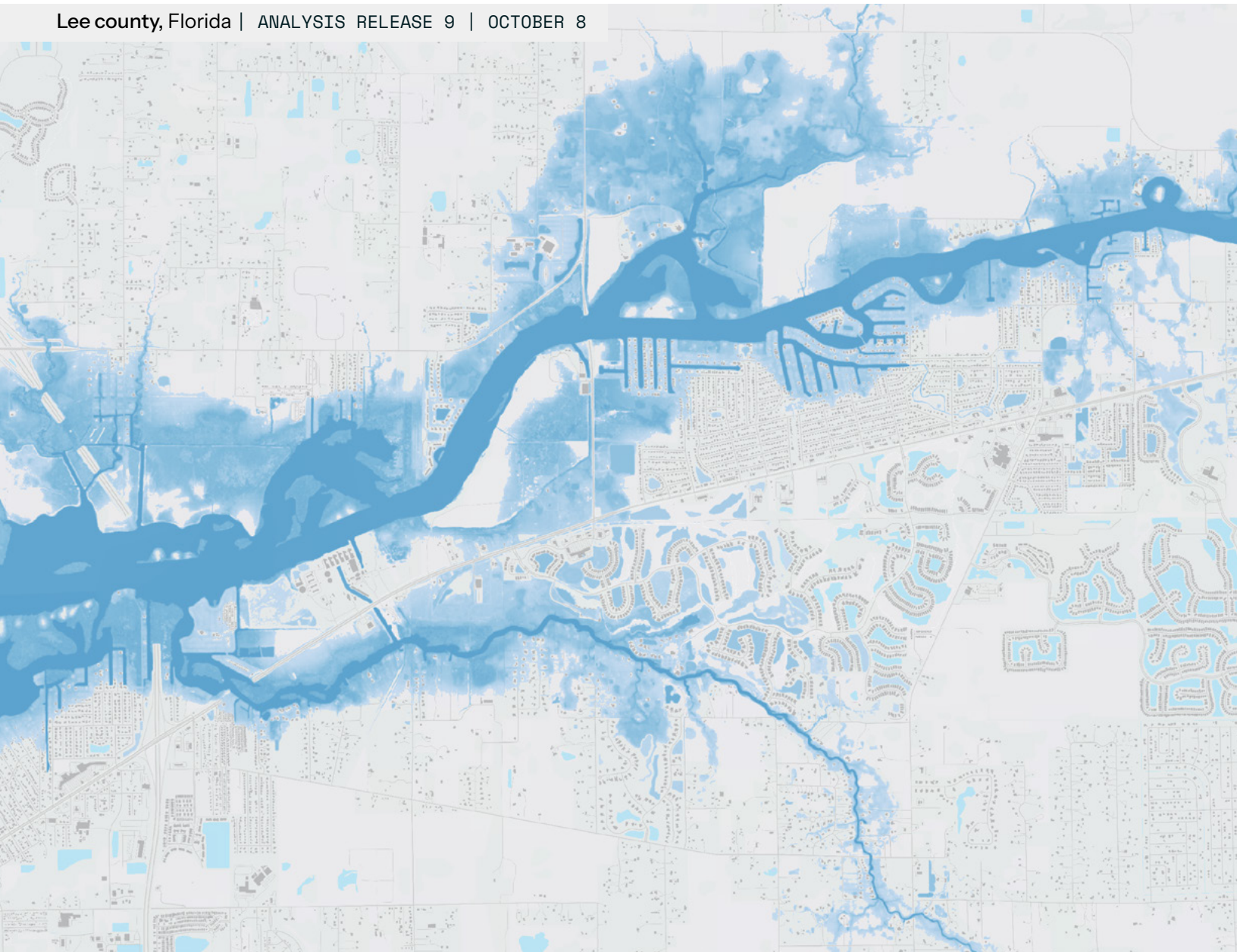


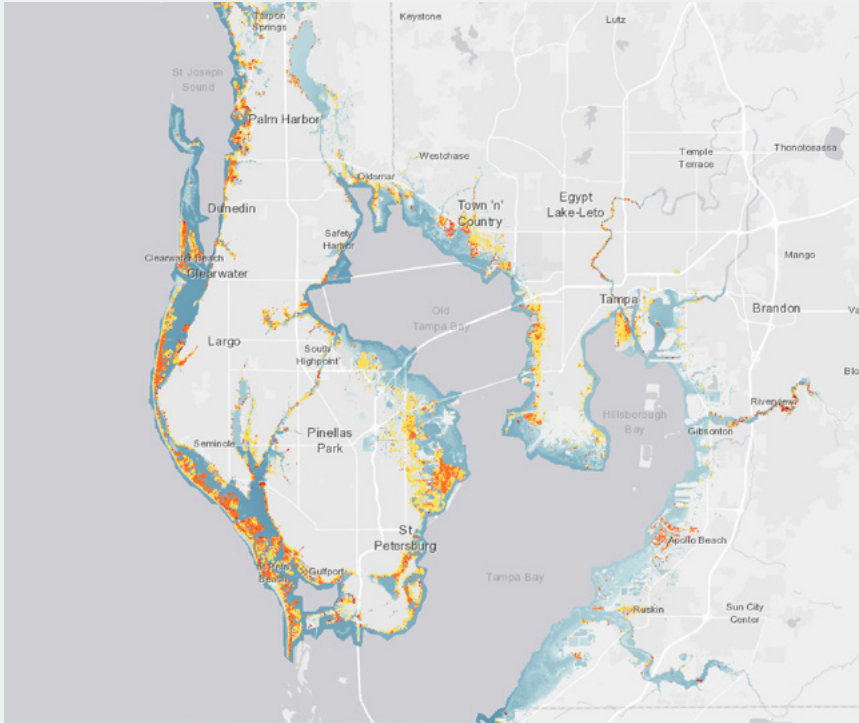
# Flooding from Hurricane Helene

Lee county, Florida | ANALYSIS RELEASE 9 | OCTOBER 8



# Flooding from Hurricane Helene

Flood briefing series powered by multisource data analysis leveraging ICEYE satellite imagery



Hillsborough county, Florida ANALYSIS RELEASE 9 | OCTOBER 8

Hurricane Helene brought significant storm surge flooding to much of the Gulf Coast of Florida.

Since 25 September, the US Southeast region has experienced heavy rainfall, with widespread totals of over 5 inches. The highest totals were recorded in the Appalachians, where more than 20 inches of rain led to catastrophic river flooding in some parts of western North Carolina.

The hurricane made landfall on September 26 in the Big Bend region of the Florida panhandle. With winds reaching 140mph, it was a category 4 storm that ranked among the most powerful to strike the United States.

ICEYE has been monitoring the storm since its formation, acquiring 150+ SAR satellite images of the impacted areas through thick storm clouds and even at night. According to our final analysis release, we identified more than 160,000 buildings that could be impacted by the flooding in the region.

TOTAL FLOOD EXTENT

3,645 sq mi (9,440 km<sup>2</sup>)

MOST AFFECTED STATES

Florida	Tennessee
Georgia	Virginia
South Carolina	West Virginia
North Carolina	

MOST AFFECTED CITIES

FLORIDA:  
**Tampa**  
**St.Petersburg**  
**Fort Myers**

NORTH CAROLINA:  
**Asheville**

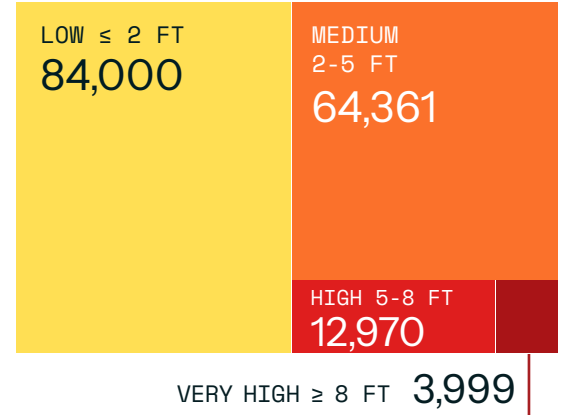
AVERAGE INUNDATION AT BUILDING LEVEL

1.72 ft (0.53 m)

IMPACTED BUILDING COUNT

165,330

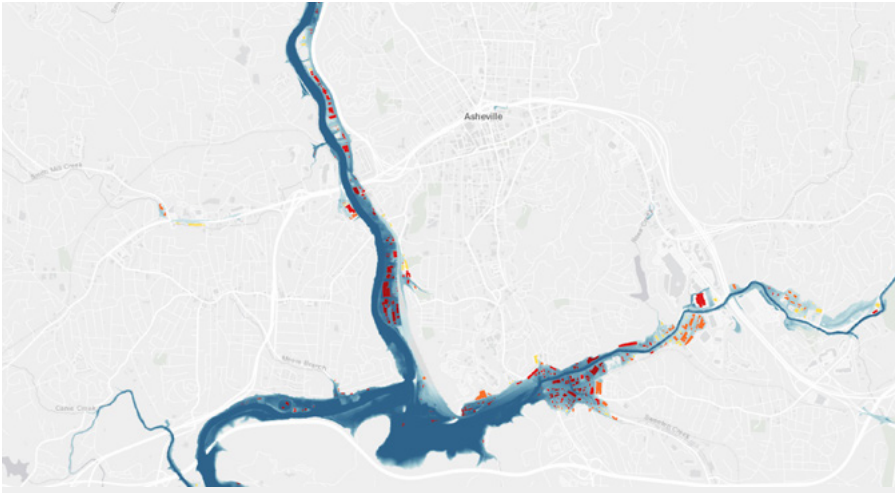
Total number of buldings affected by flood water depth category



### Disclaimer

The current data is based on ICEYE's analysis with information collected until October 8, 2024. The analysis is focused on data specific to the regions most affected by the floods. Some areas which have been impacted by the flooding may not be represented in the data.

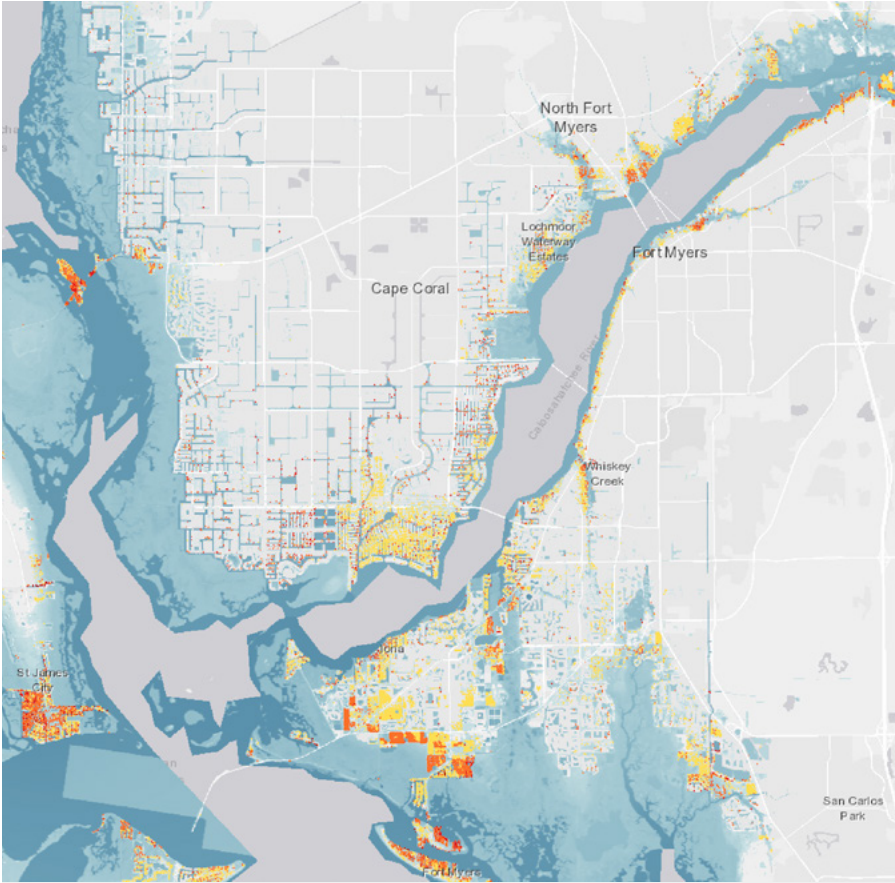
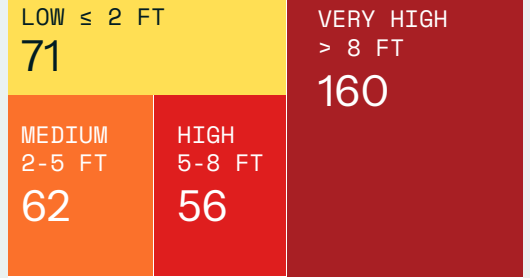




ANALYSIS RELEASE 9 | OCTOBER 8

## Asheville, North Carolina

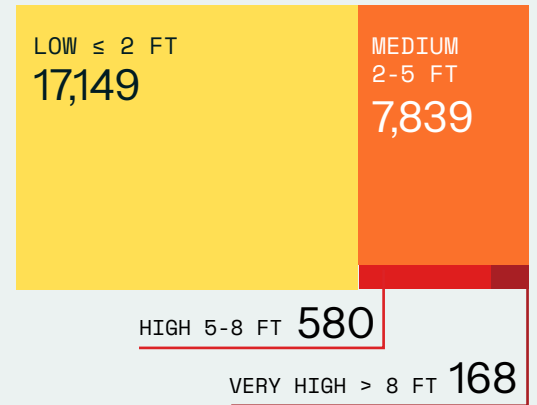
IMPACTED BUILDING COUNT **349**



ANALYSIS RELEASE 9 | OCTOBER 8

## Fort Myers, Florida

IMPACTED BUILDING COUNT **25,736**



## ICEYE analysis timeline

- Start of monitoring  
SEPTEMBER 23
- First SAR image acquisition  
SEPTEMBER 23
- Event activated  
SEPTEMBER 27
- First analysis release  
SEPTEMBER 27
- Final analysis release  
OCTOBER 8



Get the full analysis via  
[iceye.com/contact](https://iceye.com/contact)