



ICEYE Flood News Bulletin

September 28, 2024

Flood images and information on ICEYE's response and analysis - Sept 28, 2024
Hurricane Helene, Florida

Flood Images and Information - September 28, 2024

Hurricane Helene made landfall on September 26th with winds reaching 140mph, putting it at a Category 4 and ranking it among the most powerful to ever strike the United States.

ICEYE has been monitoring the storm, acquiring over 200 SAR satellite images of the impacted areas through thick storm clouds and even at night and delivered the first flood extent and depth analysis earlier today. The next release of our flood analysis is already in progress, covering additional areas in Florida, Georgia, and the Carolinas.

Our team of flood experts continue to monitor the situation & analyze and process satellite data to provide near real-time flood extent and depth information.

ICEYE's Flood Insights combines ICEYE's world-leading SAR satellite imagery with an abundance of third-party data, algorithms and machine learning, supported by a team of experts from the fields of meteorology, hydrology, and advanced geospatial analytics.

Download links for the flood situation images for media use:

- [St. Petersburg, FL](#)
- [Tampa, FL](#)
- [Charlotte County, FL](#)
- [The northwest central coast of Florida](#)

ICEYE

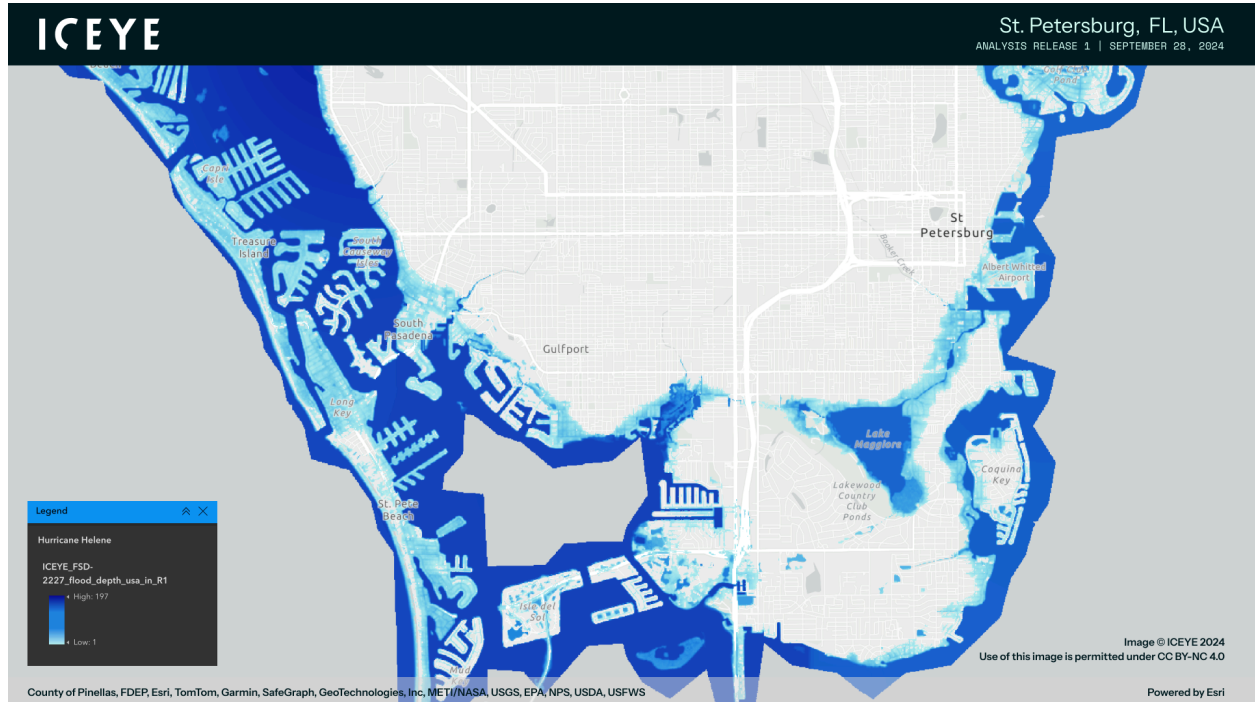


Image: Flood extent and depth in and around St. Petersburg, FL, based on the first release of ICEYE's flood analysis from September 28, 2024.

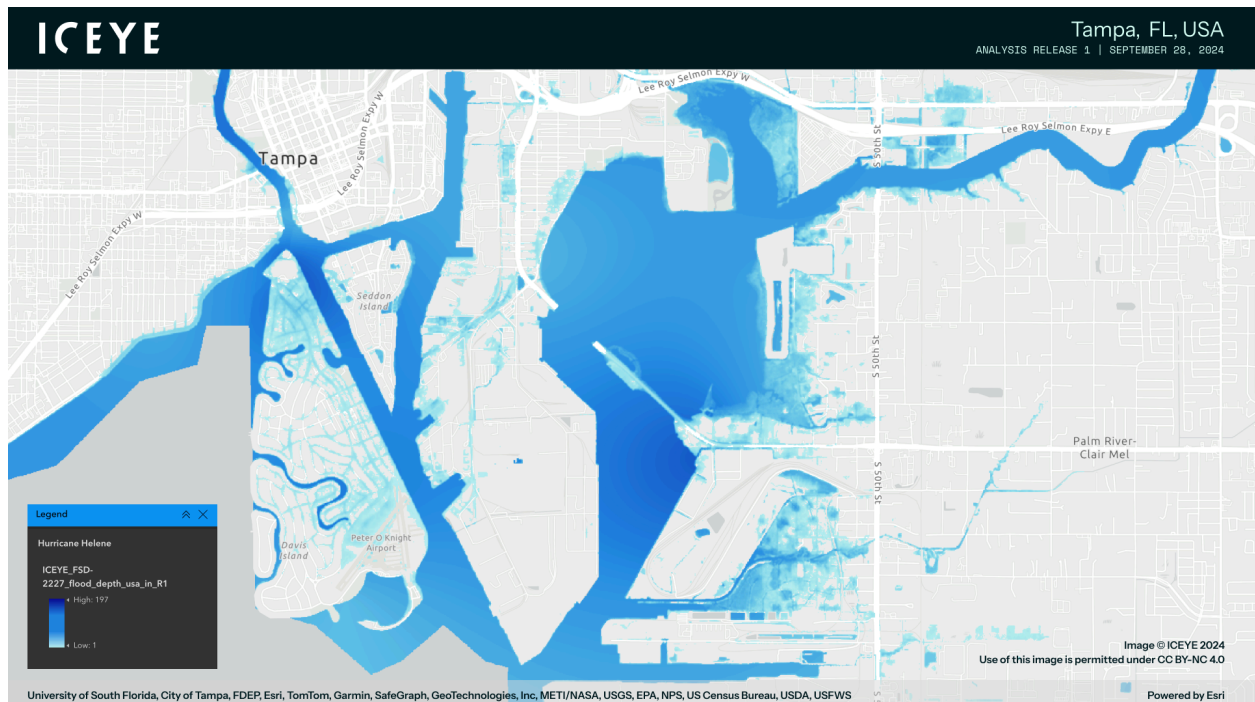


Image: Flood extent and depth in and around Tampa, FL, based on the first release of ICEYE's flood analysis from September 28, 2024.

ICEYE

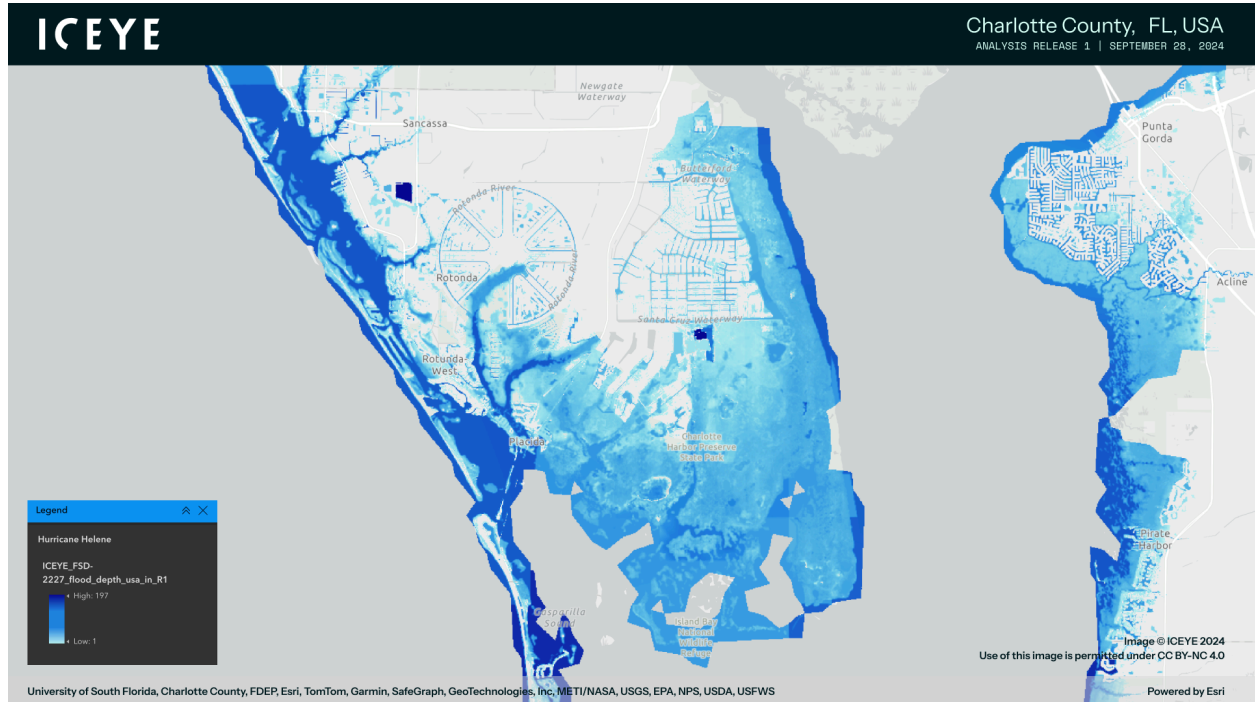


Image: Flood extent and depth in Charlotte County, FL, based on the first release of ICEYE's flood analysis from September 28, 2024.

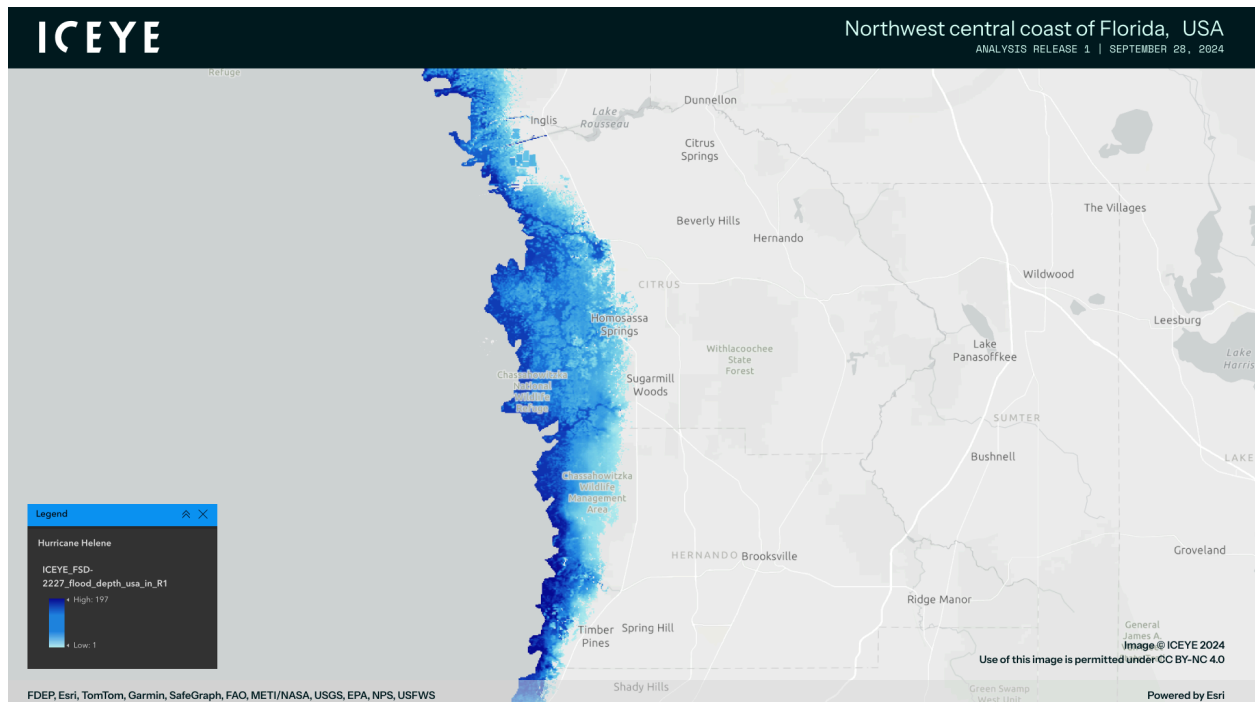


Image: Flood extent and depth along the northwest central coast of Florida, based on the first release of ICEYE's flood analysis from September 28, 2024.

ICEYE

#####

About ICEYE

ICEYE delivers unparalleled persistent monitoring capabilities to detect and respond to changes in any location on Earth, faster and more accurately than ever before.

Owning the world's largest synthetic aperture radar (SAR) satellite constellation, ICEYE provides objective, near real-time insights, ensuring that customers have unmatched access to actionable data, day or night, even in challenging environmental conditions. As a trusted partner to governments and commercial industries, ICEYE delivers intelligence in sectors such as insurance, natural catastrophe response and recovery, security, maritime monitoring, and finance, enabling decision-making that contributes to community resilience and sustainable development.

ICEYE operates internationally with offices in Finland, Poland, Spain, the UK, and the US. We have more than 700 employees, inspired by the shared vision of improving life on Earth by becoming the global source of truth in Earth Observation.

Media contacts:

ICEYE Global Communications press@iceye.fi

Visit www.iceye.com and follow us on LinkedIn at [ICEYE Global](#) and [X](#) for the latest updates and insights.