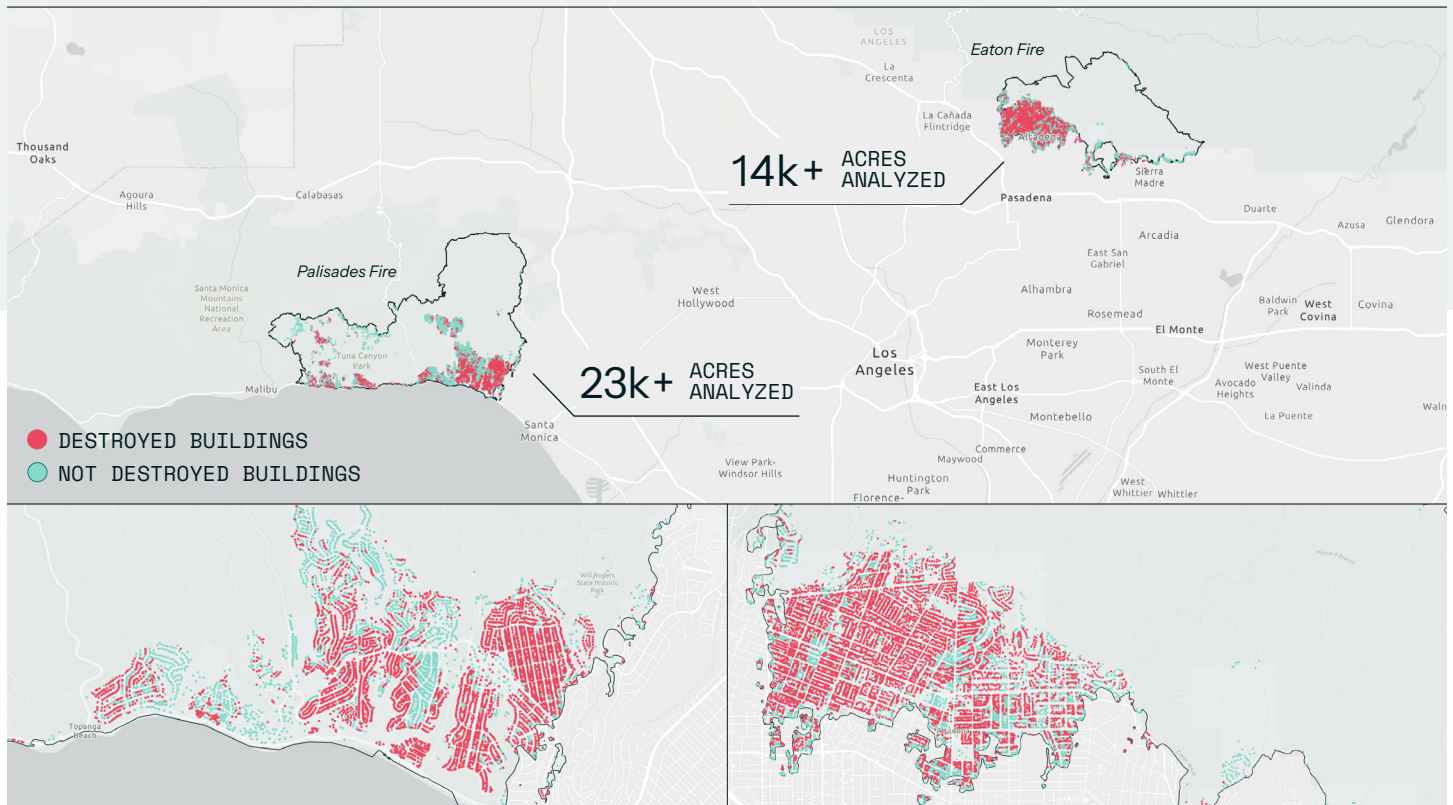


Wildfire intelligence when it matters most

Seeing through the smoke in Los Angeles, California

The devastating wildfires around Los Angeles in January 2025 demonstrated the need for quick and actionable insights on fires that are not reliant on aerial or ground resources. Covering over 37,000 acres across the Palisades and Eaton Fires, ICEYE provided emergency responders with building-level damage assessments when it mattered most, delivering initial results within 24 hours of smoke being detected.

Unlike traditional methods that rely on ground surveys or aerial assessments—both severely impacted by high winds — ICEYE’s SAR satellites saw through smoke, clouds, and darkness, delivering uninterrupted insights when airborne assets were grounded. This real-time visibility gave responders the clarity they needed to act quickly.



Palisades Fire

4,653 / 8,360 BUILDINGS LIKELY DESTROYED

24 SAR IMAGES ACQUIRED

12 RELEASES DELIVERED

94 % ACCURACY*

Eaton Fire

6,858 / 10,199 BUILDINGS LIKELY DESTROYED

17 SAR IMAGES ACQUIRED

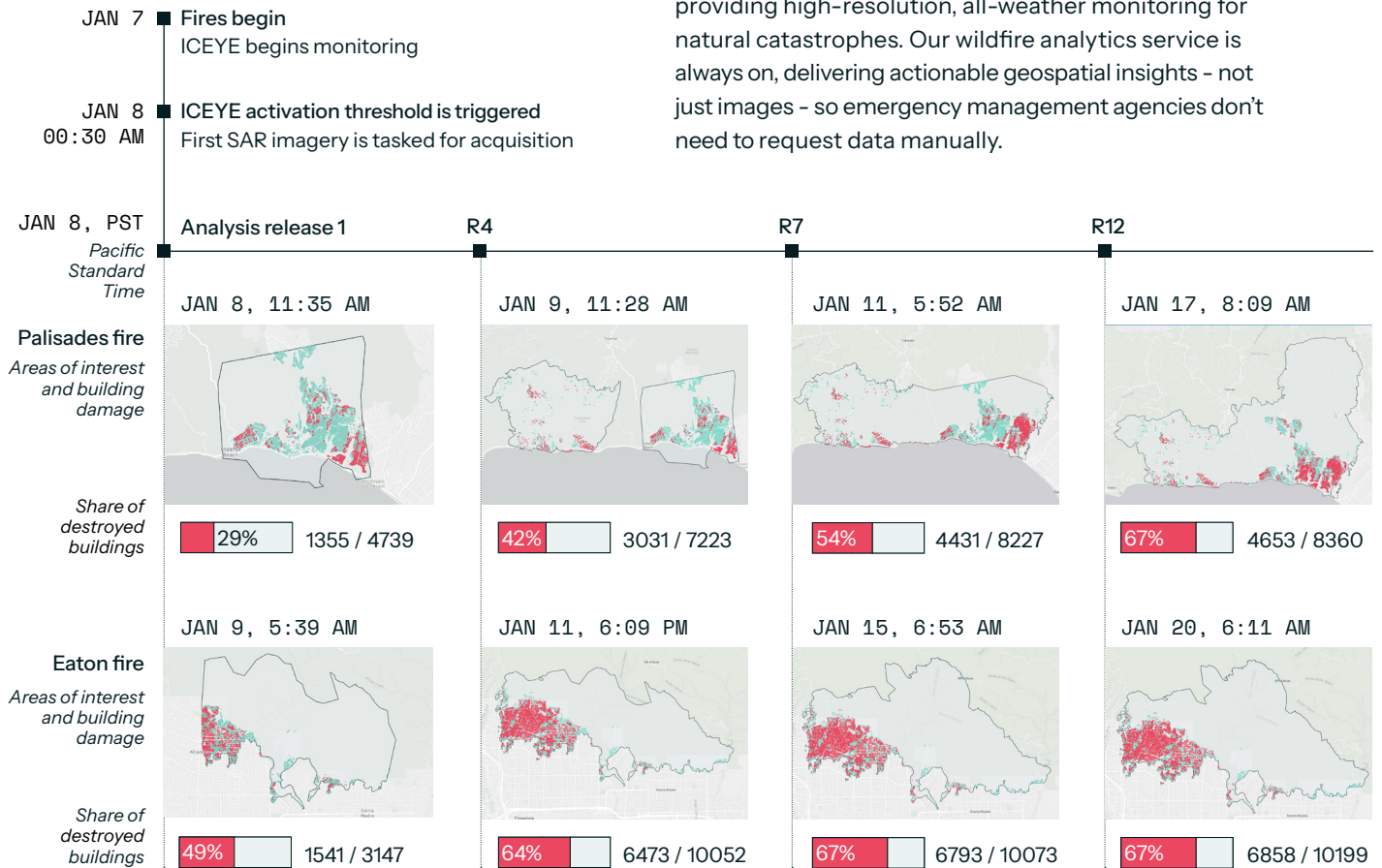
12 RELEASES DELIVERED

96 % ACCURACY*

Close-ups of building damage data from ICEYE’s 12th analysis release

*Based on ground truth data from CalFire’s field assessment, ICEYE calculated quality metrics for our final building damage assessment outputs.



Event overview & deliverables timeline



Benefit from rapid and accurate damage assessment data

ICEYE operates the world's largest SAR satellite constellation, providing high-resolution, all-weather monitoring for natural catastrophes. Our wildfire analytics service is always on, delivering actionable geospatial insights - not just images - so emergency management agencies don't need to request data manually.

Enhancing speed and accuracy

-  Persistent high winds grounded traditional airborne assets, impacting firefighting efforts and creating a blind spot for responders on the ground.
-  ICEYE acquired its first radar satellite image of the Palisades fire, analyzed the impact to buildings, and delivered the results all within 24 hours of the fire starting, and weeks before on-ground assessments were completed.

Smarter disaster response with ICEYE

- See through smoke, clouds, and darkness - while other assets are grounded.
- Faster, more efficient assessments - allows you to prioritize on-ground efforts with actionable insights.
- Always-on monitoring - so agencies and insurers get insights without delay.
- When every second counts, ICEYE provides the intelligence you need to respond faster, allocate resources efficiently, and support communities in crisis.

Trusted by federal, state, and local agencies

During the LA Wildfires, ICEYE's insights were actively used by multiple federal, state, and local agencies to assess damage, prioritize response efforts, and support recovery operations.



→ For more information, visit iceye.com/solutions